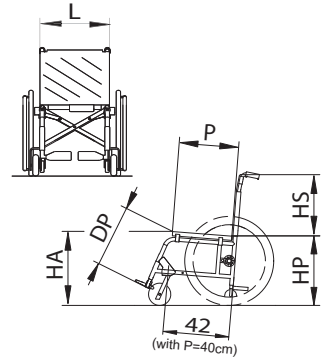


Dealer _____

MINISTAR



Key	<input type="checkbox"/> standard	<input type="radio"/> option
L Seat width	<input type="checkbox"/> 34 <input type="checkbox"/> 36 <input type="checkbox"/> 38 <input type="checkbox"/> 40 <input type="checkbox"/> 42 <input type="checkbox"/> 44	<input type="radio"/> 46 <input type="radio"/> 48 <input type="radio"/> 50 <input type="radio"/> 52 <input type="radio"/> 54 <input type="radio"/> 56 <input type="radio"/> 58 <input type="radio"/> 60
P Seat depth	<input type="checkbox"/> 36 <input type="checkbox"/> 38 <input type="checkbox"/> 40 <input type="checkbox"/> 42	<input type="radio"/> 44 <input type="radio"/> 46 <input type="radio"/> 48 <input type="radio"/> 50
HS Back-rest height	<input type="checkbox"/> 29 <input type="checkbox"/> 31 <input type="checkbox"/> 33 <input type="checkbox"/> 35 <input type="checkbox"/> 37 <input type="checkbox"/> 39 <input type="checkbox"/> 41	<input type="radio"/> 43 <input type="radio"/> 45 <input type="radio"/> 47 <input type="radio"/> 49 <input type="radio"/> 51
HA Front seat/floor height	<input type="checkbox"/> 42 <input type="checkbox"/> 43 <input type="checkbox"/> 44 <input type="checkbox"/> 46 <input type="checkbox"/> 48 <input type="checkbox"/> 50 <input type="checkbox"/> 52	<input type="radio"/> 54
HP Rear seat/floor height	<input type="checkbox"/> 38 <input type="checkbox"/> 40 <input type="checkbox"/> 42 <input type="checkbox"/> 44 <input type="checkbox"/> 46 <input type="checkbox"/> 48 <input type="checkbox"/> 50	
DP Foot-rest/seat distance	<input type="checkbox"/> 33 <input type="checkbox"/> 35 <input type="checkbox"/> 37 <input type="checkbox"/> 39 <input type="checkbox"/> 41 <input type="checkbox"/> 43 <input type="checkbox"/> 45 <input type="checkbox"/> 47 <input type="checkbox"/> 49 <input type="checkbox"/> 51	cm

Frame colour ①

Metallic blue Metallic grey Pearl red
 Glossy black
 Orange Cyclamen light purple Metallic light blue
 (see "Colours" catalogue)

Upholstery ②

Nylon
 Tension adj. nylon back-rest
 Tension adj. breathable back-r.
 Without back-rest
 Without seat

Upholstery colour ③

(nylon only)

Black
 Red Orange
 Light blue Green
 Cornflower blue

④

Not detachable foot-rest

Detachable foot-rest

Elevating foot-rest (detachable)

⑤

Plastic separate (only L = from 38 to 46 cm)

Foot-holding belts
 Heel stops

⑥

Open separate tubular foot-plates (only L = from 36 to 46 cm) (hinged when not detachable foot-rest)

Rubber coated
 Foot-holding belts

⑦

Closed separate tubular foot-plates (only L = from 36 to 46 cm) (hinged when not detachable foot-rest)

Rubber coated
 Foot-holding belts
 Heel stops

⑧

Separate aluminium profile tilt adjustable foot-plates:

forward backward
 Foot-holding belts

⑨

Single aluminium profile tilt adjustable foot-plate: (not available with elevating foot-rest)

forward backward
 Foot-holding belts

⑩

Plastic single (only L = from 36 to 44 cm)

Tip-up
 Foot-holding belts
 Heel stops

⑪

Automatic closure foot-plate (not available with detachable or elevating foot-rest; only L = from 36 to 46 cm)

Foot-holding belts

⑫

Side guards

Plastic
 Aluminium (black)
 Carbon fibre
 Plastic round cover

⑬

Detachable Desk arm-rest - h 22 cm

Open with side guards (only with HP > 42 cm)
 Closed
 27 cm high from the seat
 Tip-up

Elbow-rest

Classic (23 cm long)
 Classic (30 cm long)
 Straight (26 cm long)
 Tubular
 Hemiplegic RX
 Hemiplegic LX

⑭

Detachable Sport arm-rest - h 22 cm (not available with reclining back-rest)

Open with side guards (only with HP > 42 cm)
 Closed
 27 cm high from the seat
 Tip-up

Elbow-rest

Classic (23 cm long)
 Straight (26 cm long)
 Tubular
 Hemiplegic RX
 Hemiplegic LX

⑮

Detachable "U" arm-rest - h 22 cm

Open with side guards (only with HP > 42 cm)
 Closed
 27 cm high from the seat
 Tip-up

Elbow-rest

Straight (26 cm long)
 Straight (36 cm long)
 Tubular
 Hemiplegic RX
 Hemiplegic LX

⑯

Height adjustable arm-rest (only closed)

Desk model
 "U" model

Elbow-rest

Classic (30 cm long)
 Classic (36 cm long)
 Straight (26 cm long)
 Straight (36 cm long)
 Hemiplegic RX
 Hemiplegic LX

Dealer _____

Rear wheels (17)

- 24" (36 spokes)
- 22" (36 spokes)
- 20" (36 spokes)
- 24" Mountain-bike

Tyres

- Pneum. Plugged (x 1"3/8)
- Solid
- Pneum. high press. Plugged
- Pneum. high press. Smooth
- 24" Pneum. Marathon Plus

Handrims (18)

- Chromium-plated steel
- Aluminium silver
- Aluminium dark
- Rubber coated
- Steering (only 24" & 22")
- Tween Greep(only 24" & 22")
- Max Grepp
- Max Grepp Ergo (*)
- Silicon covers

(*) Not available with Mountain-bike wheels

Spoke guards (19)

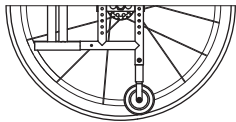
- Transparent
- White
- Black
- Multicolour
- Black plumed red
- Black plumed blue
- Black plumed green
- Alphabet

Front castors (20)

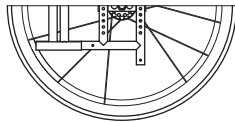
- 100 (4") solid
- 125 (5") solid
- 150 (6") solid
- 175 (7") solid
- 175 (7") pneumatic

Rear frame

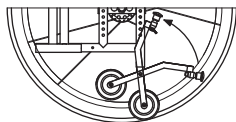
- With small wheels for narrow passages - standard



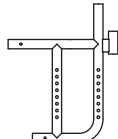
- Without small wheels for narrow passages



- Small wheels for narrow passages with lever



- Curved rear frame



(Compulsory: rear seat/floor height HP= from 44 to 48 cm)

(It is not possible to assemble the small wheels for narrow passages)

Unbalancing system (21)

- Right Right
- Left Left

(Only with curved rear frame)

Anti-tip device

- Right
- Left

Revolving anti-tip device
(Only with curved rear frame)

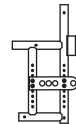
- Right
- Left

Single drive (23)

- Right
- Left



Extended wheel plate (24)



Compulsory with reclining back-rest

Pushing handles
(Not with reclining back-rest) (25)

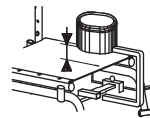
- Standard
- Hinged back-rest (without stretched bar HS > 37) (with stretched bar HS > 43) (max L = 48 cm)
- Height adjustable (max L = 48 cm)

Reclining back-rest (26)

- from 90° to 150° with fixed pushing handles
- from 90° to 150° with height adjustable pushing handles (max L = 44 cm)

Compulsory: closed arm-rest and stretched bar

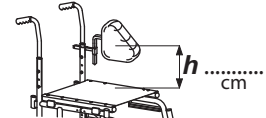
Abductor (27)



- 1 3 5 7 cm
- cm

Choose or specify the height from seat cover

Lateral supports (28)



- Right
- Left

Specify the height "h"

Head-rest (29)

- Padded
- Moulded
- Fixed
- Height adjustable

Orbital

- Moulded
- Anatomic

Specify "h" & "d" where requested

Standard: h = 20 cm d = 15 cm

h = cm d = cm

Table (30)

- Transparent
- Plastic grey
- Soft padded

Specify the fastening:
 single double



(Only with arm-rest)

Lined cushion
in foam polyurethane (33)



- 3 cm high
- 5 cm high

Brakes (31)

- Classic - short handle
- Classic - long handle
- Right single brake
- Left single brake
- Drum

Options

- 34 "M" velcro strip (hook) on seat
- 35 "F" velcro strip (loop) on seat
- 36 Seat/back-rest connection flap
- 37 Padded rigid seat
- 38 Chest harness
- 39 Chest belt
- 40 Abductor belt
- 41 Double cross bar
- 42 Stretched bar
- 43 WC seat
- 44 Foot-rest with spring
- 45 Back-rest with spring

Anodized set (32)

(Rear wheel rim and forks)

- Silver
- Light blue
- Orange

(Only 36 spoke wheels)

Options

- 46 Catheter holder pocket
- 47 Back anatomic board
- 48 Rx Lx Crutch holder
- 49 Pump for pneumatics
- 50 Suitcase holder
- 51 45° pelvic belt
- 52 45° padded pelvic belt
- 53 Black holdall
- 54 Holdall with bottle holder
- 55 Umbrella holder
- 56 IV poles
- 57 IV bar+poles